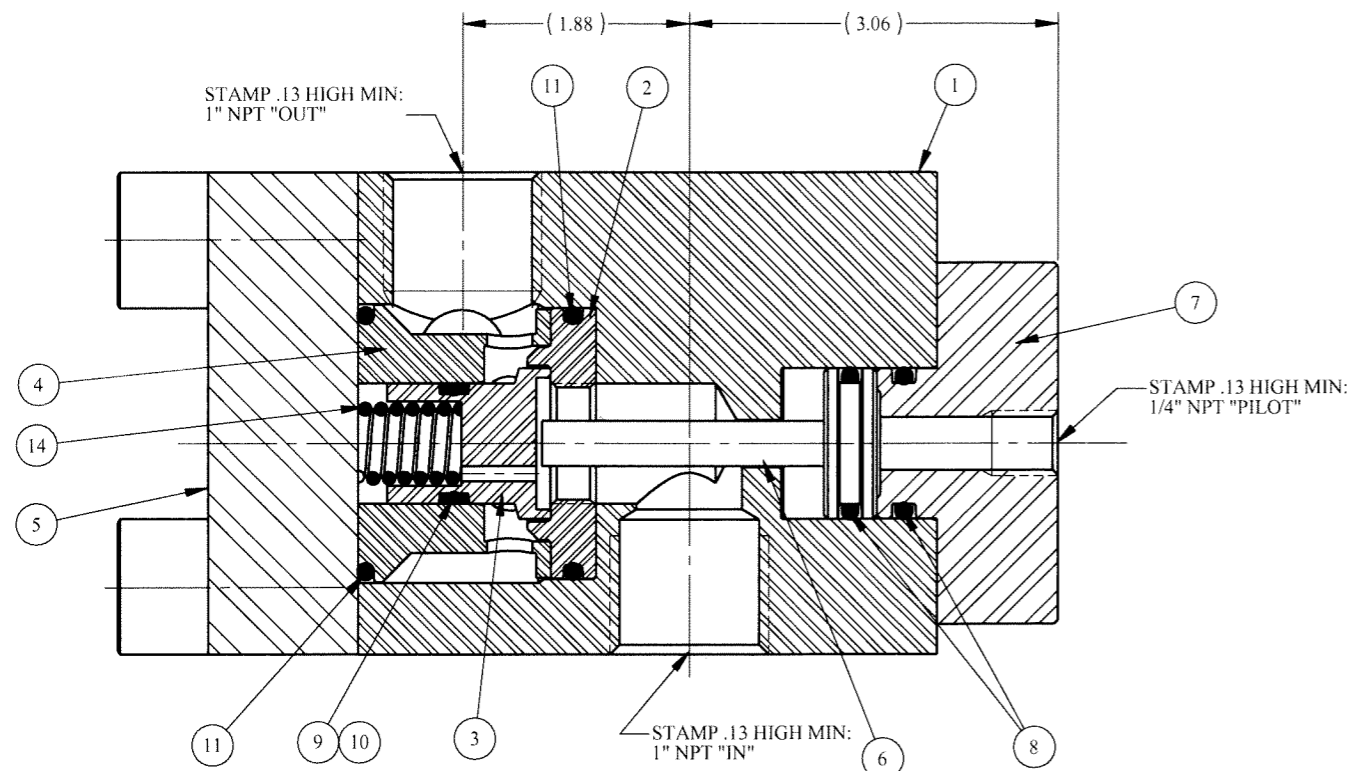
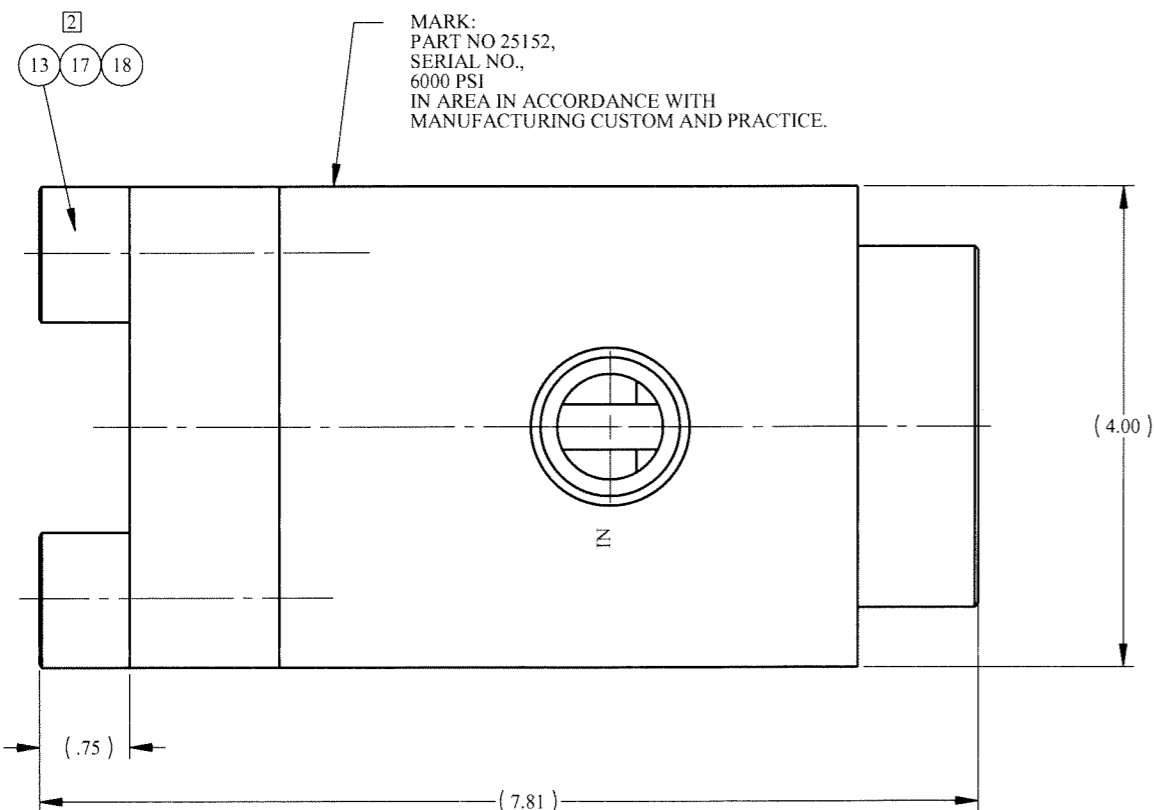
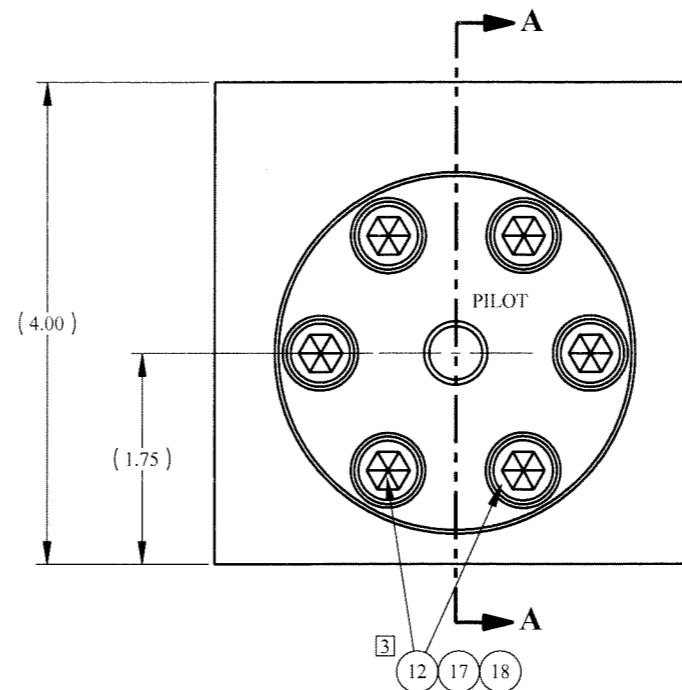


REV	ECN/ERN NO.	DRWN	CHKD	APPD
F	ECN 3049	JOSE' 2/23/06	BEM 2/24/06	BEM 2/24/06

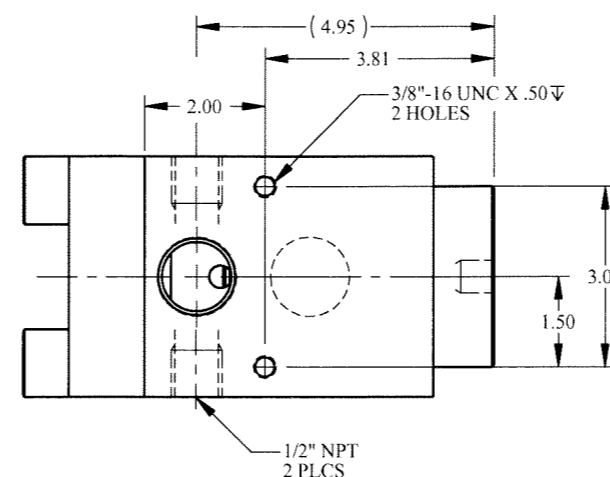
ITEM NO	QTY	PART NO.	DESCRIPTION	RKSK
1	1	23436	BODY, 1" NPT	
2	1	27157	SEAL	X X
3	1	22909	SEAL SLEEVE	X
4	1	22908	CAGE	
5	1	13150	BLIND FLANGE	
6	1	22912	PISTON	
7	1	23432	1" PILOT FLANGE W/ 1/4"NPT	
8	2	18100-107C	O-RING	X X
9	1	18100-074B	O-RING	X X
10	2	18110-115T	BACKUP RING	X X
11	2	18100-102C	O-RING	X X
12	6	18220-001S	S.H.C.S., 3/8-16 UNC X 1-1/4	
13	4	18224-039	S.H.C.S., 3/4-10 UNC X 2	
14	1	12050	SPRING, COMPRESSION	



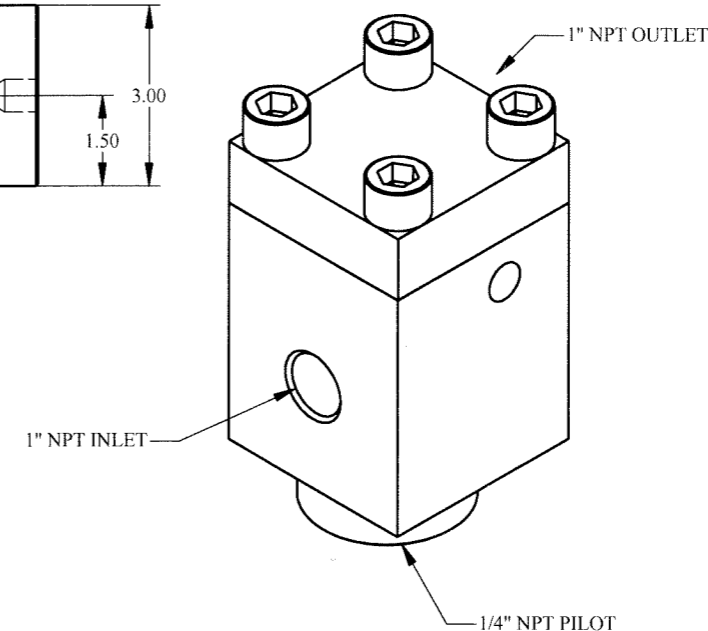
SECTION A-A



MARK:
PART NO 25152,
SERIAL NO.,
6000 PSI
IN AREA IN ACCORDANCE WITH
MANUFACTURING CUSTOM AND PRACTICE.



**MOUNTING DETAIL
TOP VIEW**



PRESSURE DATA

MAXIMUM PRESSURE - 6,000 PSI
PROOF PRESSURE - 9,000 PSI
CRACKING PRESSURE - 110 PSI
PILOT PRESSURE/OUTLET RATIO - 1:4
PILOT VENT - INTERNAL

FLOW DATA

MAXIMUM FLOW CAPACITY - 250 GPM
Cv = 11.5
FLUIDS - WATER, AND MINERAL OIL
BASED HYDRAULIC FLUID

PORTS

INLET - 1" NPT
OUTLET - 1" NPT
OUTLET CROSS PORT - 1/2" NPT
PILOT - 1/4" NPT

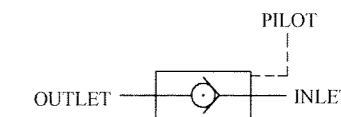
GENERAL DATA

TEMPERATURE RANGE - +32°F TO +200°F
APPROX WEIGHT - 27 LBS
FIELD SERVICEABLE

MATERIALS

STAINLESS STEEL
PEEK
NITRILE RUBBER

PATENT NO. 4,793,590 APPLIES



SCHEMATIC

NOTES:
1. TORQUE PILOT FLANGE BOLTS (ITEM 12) TO 18 FT-LBS.
2. TORQUE MAIN FLANGE BOLTS (ITEM 13) TO 200 FT-LBS.
T. X DEPICTS PARTS IN REPAIR KIT 25152 RK/SK.

MATERIAL SEE INDIV BOM ITEMS	UNLESS OTHERWISE SPECIFIED TOLERANCES: DECIMALS FRACTIONS ANGLES .XX ± .01 ± 1/32 ± .1° .XXX ± .005 ± 1/64 ± .1°	DRWN BY CVC	DATE 6/9/82	GILMORE VALVE CO. 1231 LUMPKIN RD. HOUSTON, TX. 77043
		CHKD BY BW	DATE	
TREATMENT	CONDITION	APPD BY	DATE	
PROC. NO.	DEBURR BREAK SHARP EDGES .010 INTERNAL RADIUS .015 FINISH #2	ERN NO.	DATE	
THE INFORMATION CONTAINED IN THIS DRAWING IS THE SOLE PROPERTY OF GILMORE VALVE CO. UNLESS OTHERWISE STATED. ANY REPRODUCTION IN PART OR WHOLE WITHOUT THE WRITTEN PERMISSION OF GILMORE VALVE CO. IS PROHIBITED.		DIMENSIONS ARE IN INCHES DO NOT SCALE DRAWING INTERPRET DIM. & TOL. PER ASME Y14.5M - 1994		VALVE, CHECK, PILOT OPERATED, 1" NPT
SIZE C	DWG NO. 25152	SCALE 1:1	SOLIDWORKS	REV F
			SHEET 1 OF 1	