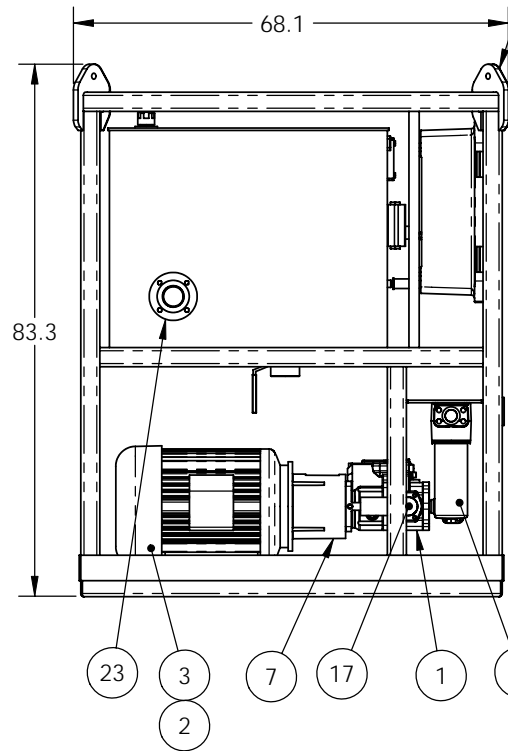
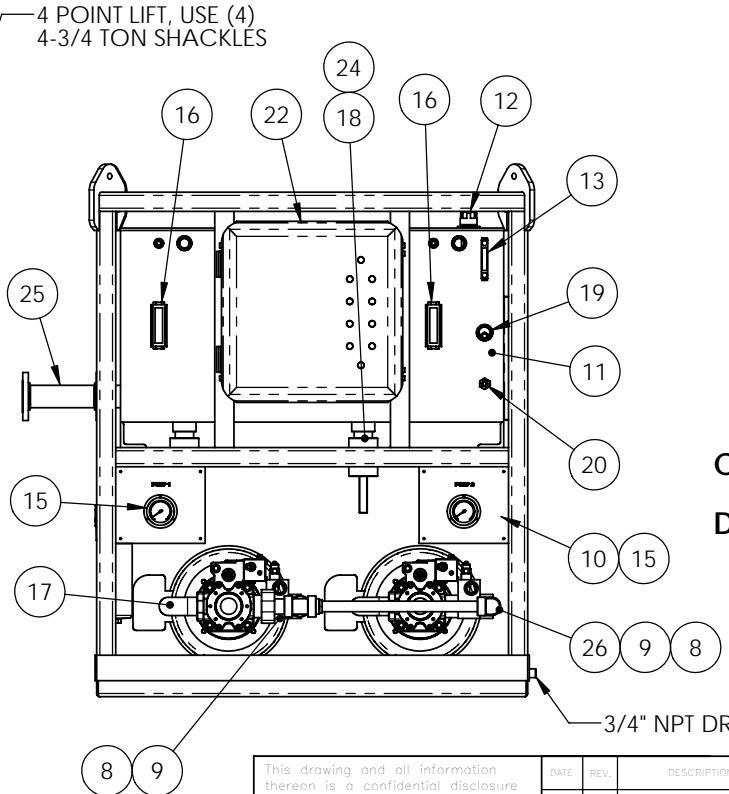


RESERVOIR REMOVED FOR CLARITY



NOTES: UNLESS OTHERWISE SPECIFIED

1. HYDRAULIC OUTPUT:  
2X 65 (130) GPM @ 3000 PSI
2. ELECTRICAL INPUT:  
2X 60 HP/ 480 VAC/ 3 PH/ 60 Hz
3. REF DWG E2057 FOR ELECTRICAL DIAGRAM
4. REF DWG H2057 FOR HYDRAULIC DIAGRAM.
5. APPROX. WEIGHT: 7000.0 LBS (DRY)



ITEM NO.	QTY.	PART NO.	DESCRIPTION
1	2	PU2057-01	PUMP, HYDRAULIC
2	4	PU2057-02	MOTOR DAMPER
3	2	PU2057-03	MOTOR, AC ELECTRIC
4	2	PU2057-04	MOTOR COUPLING, KEYED
5	2	PU2057-05	INSERT
6	2	PU2057-06	PUMP COUPLING, KEYED
7	2	PU2057-07	PUMP ADAPTER
8	2	PU2057-08	VALVE, CHECK
9	2	PU2057-09	RELIEF VALVE, DIRECT-ACTING
10	1	PU2057-10	WELDMENT, SKID
11	1	PU2057-11	WELDMENT, 300 GALLON RESERVOIR
12	1	PU2057-12	FILLER/BREATHER
13	1	PU2057-13	SIGHT GAUGE
14	1	PU2057-14	PRESSURE FILTER, 2" CODE 62
15	2	PU2057-15	GAUGE, PRESSURE , 0 - 5000K
16	2	PU2057-16	FLOW METER, HEDLAND H700B-010
17	2	PU2057-17	WELDMENT, 2 1/2" SUCTION
18	2	PU2057-18	BALL VALVE, 2 1/2" NPT
19	1	PU2057-19	SWITCH, LEVEL
20	1	PU2057-20	SWITCH, TEMP
21	2	PU2057-21	SUCTION STRAINER, 2 1/2" NPT
22	1	PU2057-22	ENCLOSURE, EXPLOSION-PROOF
23	1	PU2057-23	FLANGE, THRD 3"-150# R.F. ANSI
24	4	PU2057-24	CLOSE NIPPLE, 2 1/2" NPT
25	1	PU2057-25	ASSEMBLY, 3" PIPE SPOOL
26	1	PU2057-26	WELDMENT, PRESSURE PIPE

CUSTOMER APPROVAL: \_\_\_\_\_

DATE: \_\_\_\_\_ COMMENTS: \_\_\_\_\_

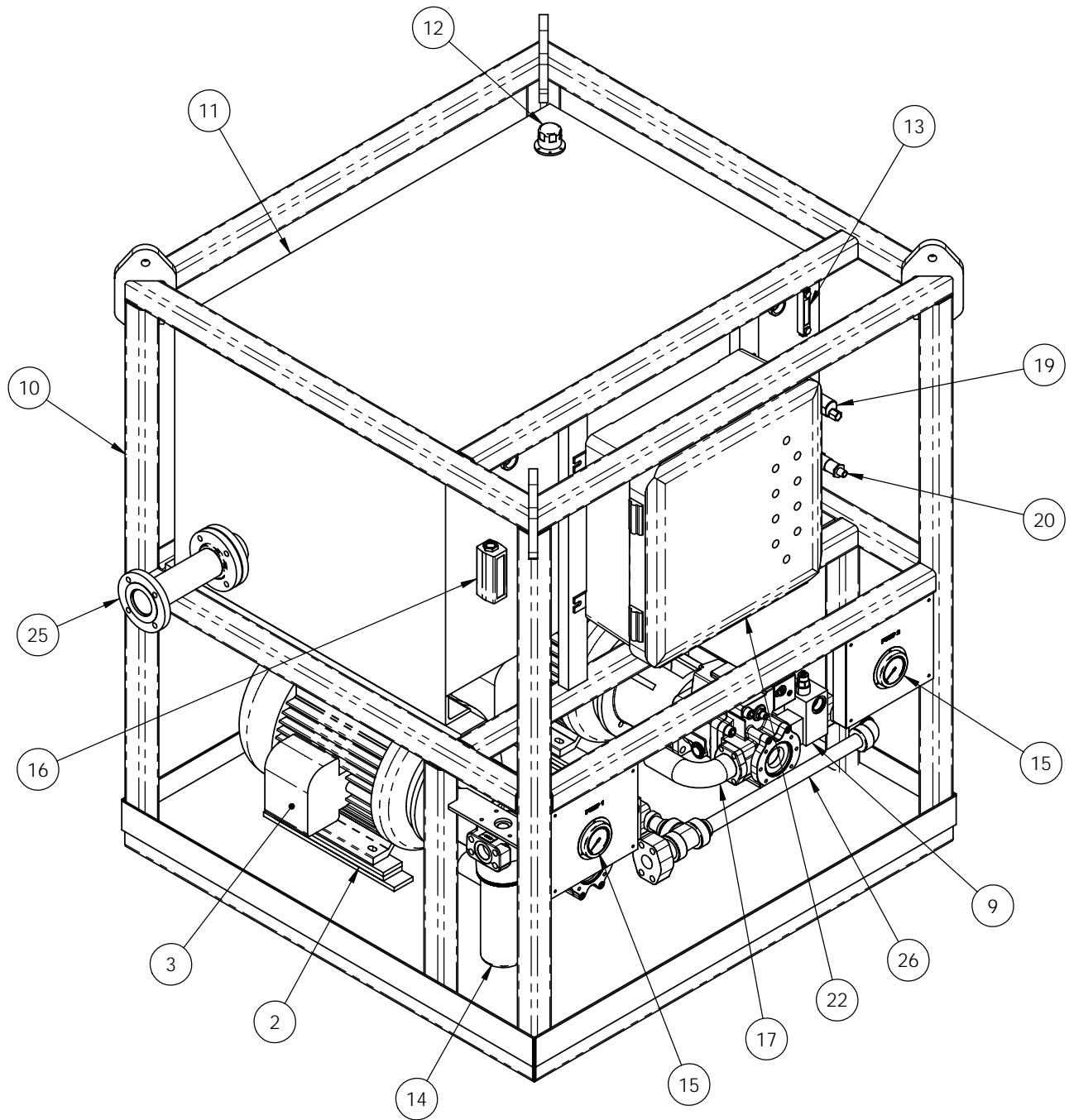
**LOGAN INDUSTRIES, INC.**

This drawing and all information thereon is a confidential disclosure of which is the property of **LOGAN INDUSTRIES, INC.** to which is loaned and subject to return upon demand. Nothing may be reproduced, used, or disclosed in anyway directly or indirectly that may be detrimental to the interest of **LOGAN INDUSTRIES, INC.**

DATE	REV.	DESCRIPTION	DRAWN BY	APP'D BY



DESCRIPTION			
<b>HYDRAULIC POWER UNIT ASSEMBLY</b>			
DESIGNED BY	NEH	DATE	06/28/07
CHECKED BY	SJO	DATE	07/02/07
APPROVED BY	SEB	DATE	07/02/07
MATERIAL		WEIGHT	10029 LBS
SCALE: 1:20	SHEET 1 OF 2	CAD DWG. #	GA2057



# LOGAN INDUSTRIES, INC.

CUSTOMER				
DESCRIPTION <b>HYDRAULIC POWER UNIT ASSEMBLY</b>				
DESIGNED BY	NEH	DATE	06/28/07	SCALE: 1:1
DRAWN BY	SJO	DATE	07/02/07	SHEET 2 OF 2
APPROVED BY	SEB	DATE	07/02/07	CAD DWG. #
MATERIAL:		WEIGHT:	10029 LBS	GA2057

DIMENSIONS IN INCHES  
 UNLESS OTHERWISE SPECIFIED  
 .X = ± 0.060  
 .XX = ± 0.030  
 .XXX = ± 0.015  
 ANGLES = ± 1.0°  
 ALL SURFACES = 25°  
 ALL DIMENSIONS TO CENTER UNLESS OTHERWISE SPECIFIED